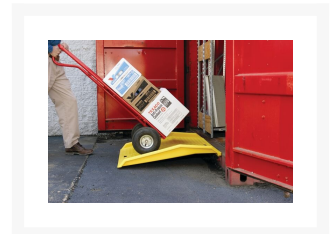
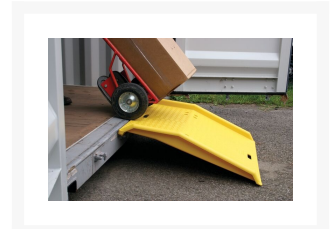
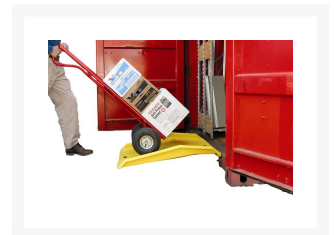


Plastic Shipping Container Ramp, 10" Height Difference, Yellow - 1795CR

Product Images



Short Description

Poly Shipping Container Ramp for use with hand trucks and dollies for loading and unloading.

Description

Poly Shipping Container Ramp for use with hand trucks and dollies for loading and unloading. Constructed of high-density polyethylene (HDPE) for excellent strength and durability. Ramp features a hook rail that attaches to the doorkeepers for secure three-point contact and support across the width of the ramp, as well as a tab that inserts into the keepers to help prevent lateral movement of the ramp during use. This

lightweight ramp (25 lbs.) also features a 750 lbs. load capacity and a 10" height differential.

Specifications

| | |
|-------------------------|---------------------------|
| Model No | 1795CR |
| Color | Yellow |
| Dimensions, Exterior | 35W x 36D x 6H |
| UPC | 48441002924 |
| Material Specifications | High-Density-Polyethylene |
| Pallet Quantity | 18 |
| Net Weight, lbs | 25 |
| Net Weight, kgs | 11.34 |